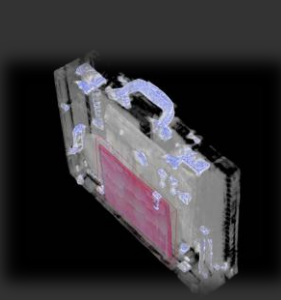




IED - Package Inspection and Mailroom Procedures

Presented by:

National Domestic Preparedness Coalition



Dates: January 10&11, 2012
Time: 0830 - 1700
Where: Renaissance Arlington Capital View Hotel
2800 South Potomac Ave
Arlington, Virginia 22202

This two day course will review common Improvised Explosive Devices (IED) used in mailroom and package attacks. Participants will be presented with detailed examples of IED's, X-ray and current detection equipment, methods to establish evacuation protocols for IED threats (e.g. fire drill, code word), past attack tactics and best practices relating to package handling and mailroom procedures.

Emergency Responders and Private Sector Security Professionals will gain a basic knowledge of Explosives, Improvised Explosive Devices and Booby Traps; how to recognize them and what to do when they encounter them. In addition, Responders and Security Professionals are taught how to recognize suspicious packages, package handling and mail handling procedures and what to do when they encounter a suspicious package. The second section of the course focuses on Vehicle Borne Improvised Explosive Device through case studies; VBIED Construction and Indicators; Vehicle search techniques and procedures.



The lead instructor for this course is Dave Williams, FBI, Supervisory Special Agent Retired. Mr. Williams supervised and was the principal FBI Laboratory Examiner in the bombing of the World Trade Center, New York; the bombing of the Alfred P. Murrah Federal Building in Oklahoma City; the bombing of a French owned DC-10, UTA Flight 772 in Chad, Africa, and the accident investigation aboard the USS Iowa. He also participated at the crime scene following the bombing aboard Pan Am Flight 103 over Lockerbie, Scotland; the UNABOMB investigation and many others.

**Course Fee = \$595.00 Federal, State, Local Government, and NDPCI members
\$695.00 Non-Government**

To Attend, Please Contact: Mark Starring at mstarring@ndpci.us or call 401-294-2300

TRAINING ANNOUNCEMENT